

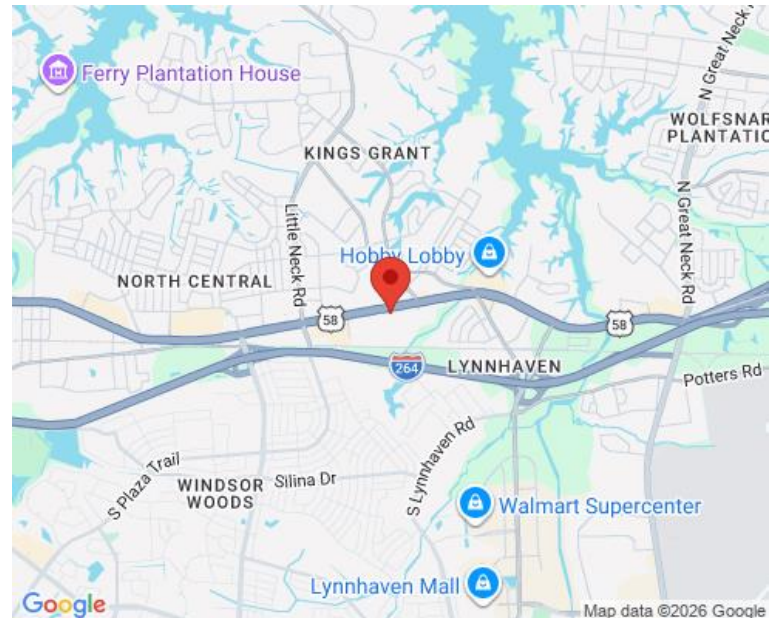


### PROPERTY OVERVIEW

Located on Virginia Beach Boulevard in the Rose Hall historical district, Village Shoppes at Rose Hall is a neighborhood retail center ideal for prime office, services and retail shops.

- Frontage on Virginia Beach Boulevard, a major east/west artery, with close access to I-264
- B-2 Zoning
- **FULLY LEASED**

### AREA MAP



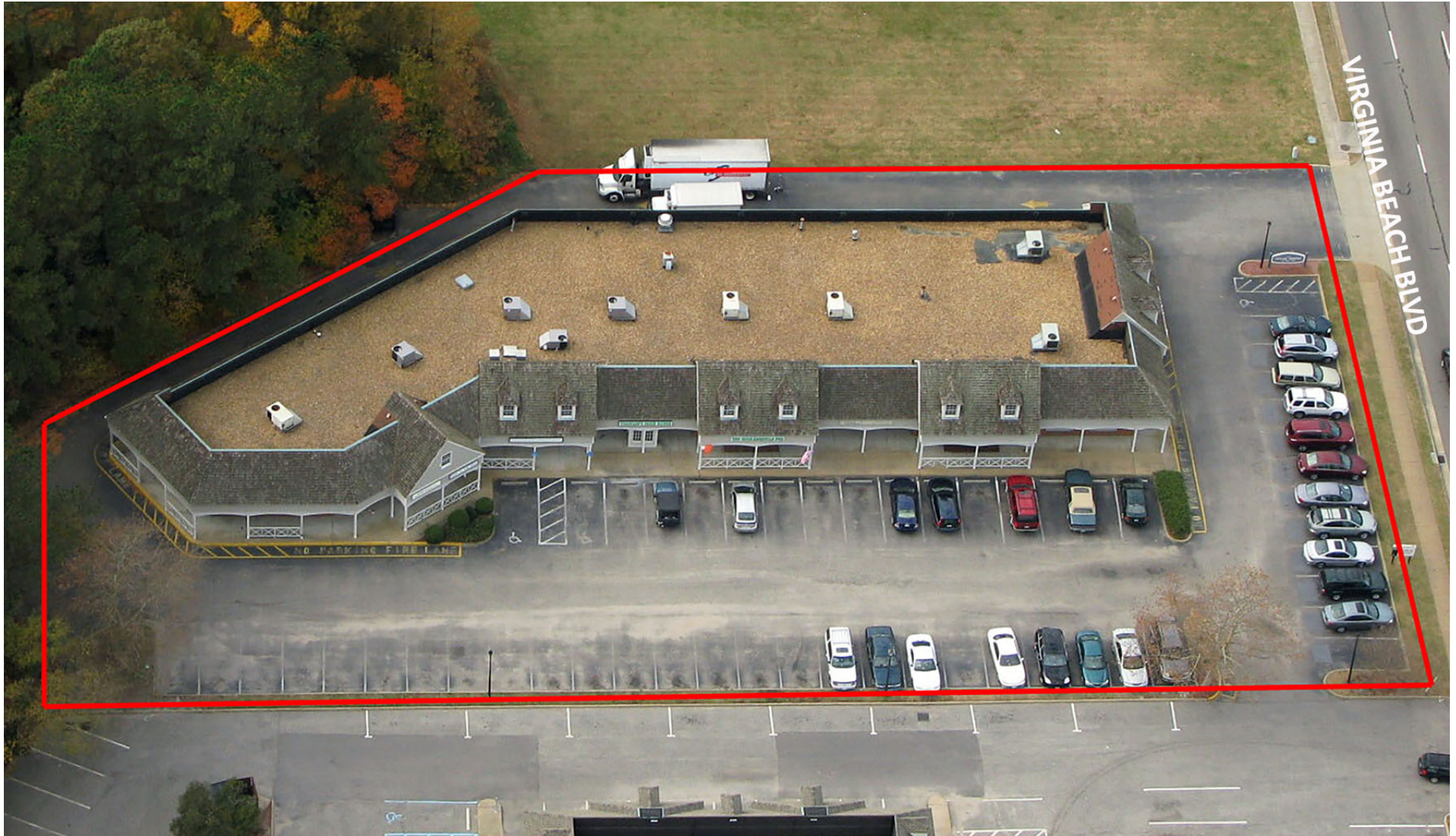
### DEMOGRAPHICS

Radius:	1 mile	3 mile	5 mile
Population:	13,300	95,213	240,993
Average HH Income:	\$78,112	\$84,302	\$87,424
Traffic Count:	±37,175 VPD		

FOR MORE INFORMATION, PLEASE CONTACT:

**LENNY BURNS**  
(757) 490-3141  
[lburns@pembrokerealty.com](mailto:lburns@pembrokerealty.com)

**Pembroke Realty Group**  
4433 Corporation Lane, Suite 250  
Virginia Beach, VA 23462  
[www.pembrokerealty.com](http://www.pembrokerealty.com)

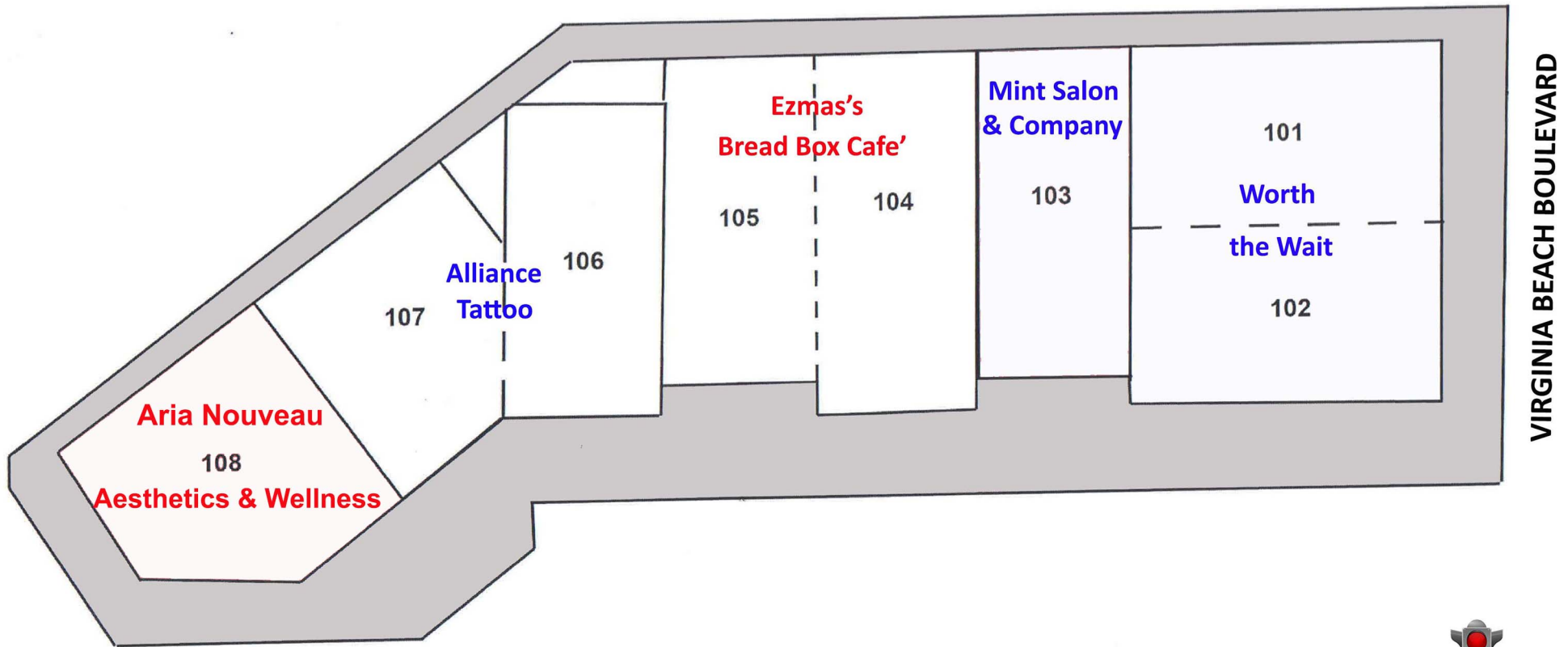


FOR MORE INFORMATION, PLEASE CONTACT:

**LENNY BURNS**  
(757) 490-3141  
[lburns@pembrokerealty.com](mailto:lburns@pembrokerealty.com)

**Pembroke Realty Group**  
4433 Corporation Lane, Suite 250  
Virginia Beach, VA 23462  
[www.pembrokerealty.com](http://www.pembrokerealty.com)

VILLAGE SHOPPES AT ROSEHALL



Updated 4/9/25



FOR MORE INFORMATION, PLEASE CONTACT:

**LENNY BURNS**  
(757) 490-3141  
[lburns@pembrokerealty.com](mailto:lburns@pembrokerealty.com)

**Pembroke Realty Group**  
4433 Corporation Lane, Suite 250  
Virginia Beach, VA 23462  
[www.pembrokerealty.com](http://www.pembrokerealty.com)