

## 1,506 SF Restaurant



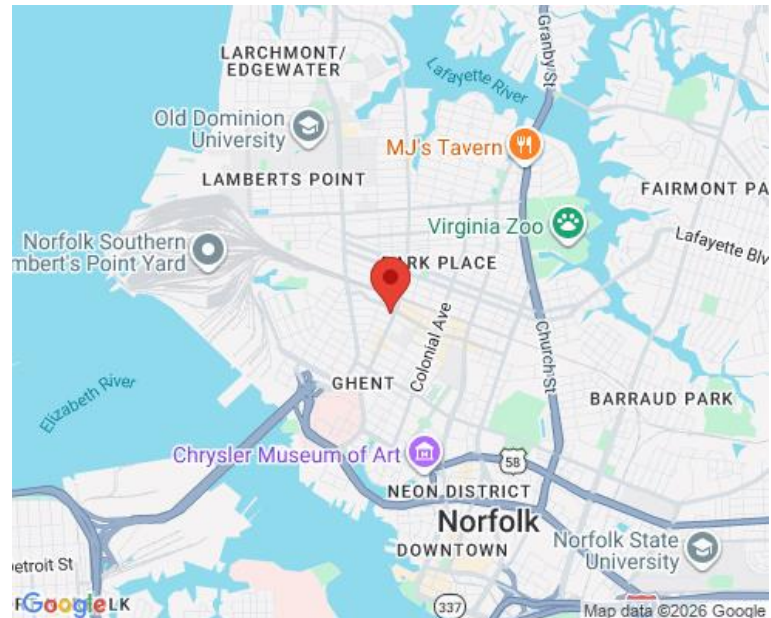
### PROPERTY OVERVIEW

Located in the heart of Ghent on Colley Avenue close to W. 21st Street. Great opportunity to be located next to Papa John's and Subway.

- New awnings and renovations to the building were completed in early 2025
- Excellent visibility and walkability location

**AVAILABLE: ±1,506 SF RESTAURANT SPACE - 10' hood, triple sink, two restrooms and outdoor patio**

### AREA MAP



### DEMOGRAPHICS

Radius:	1 mile	3 mile	5 mile
Population:	22,499	98,248	241,231
Average HH Income:	\$86,403	\$85,256	\$76,681
Traffic Count:	±14,803		

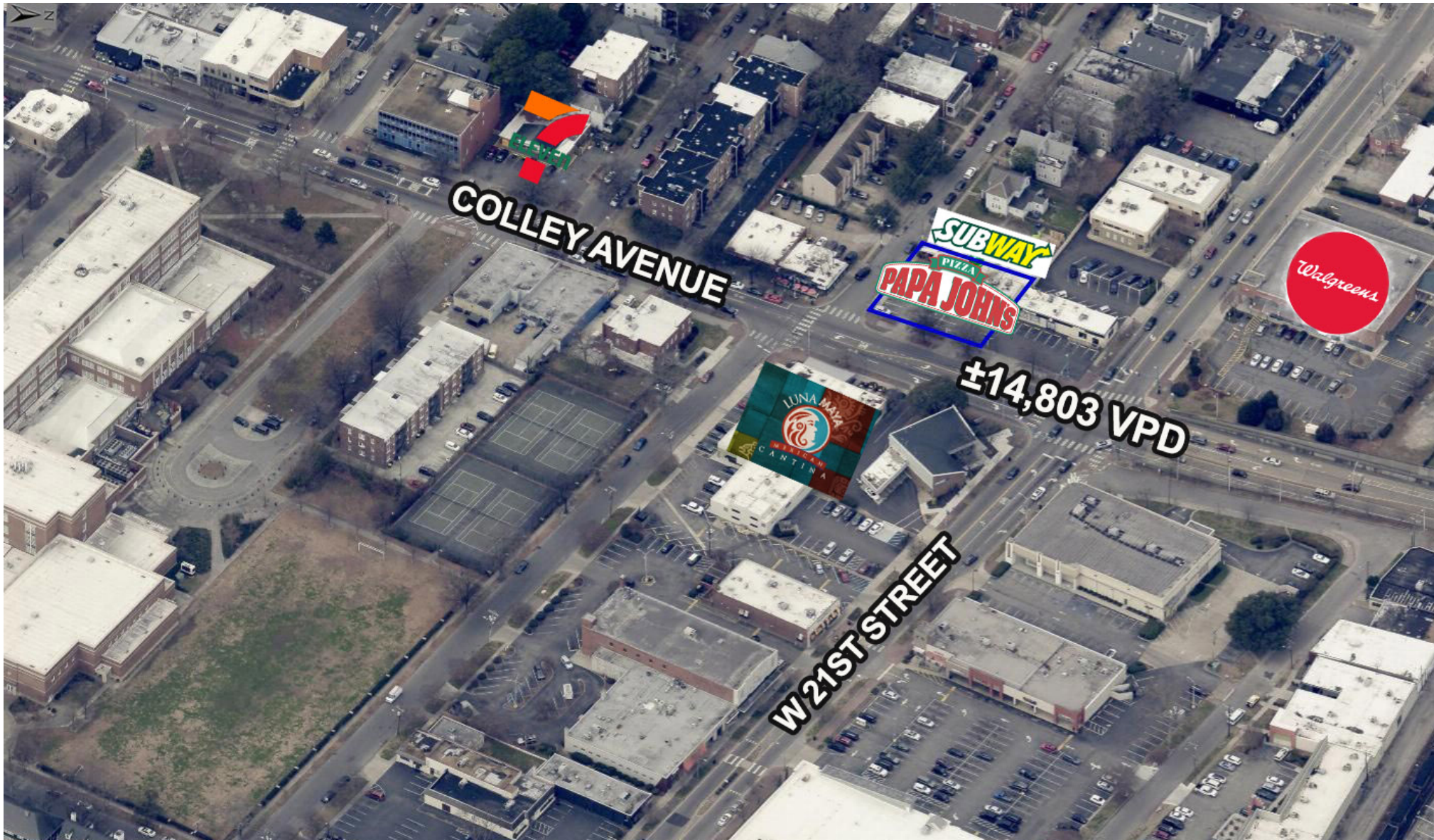
FOR MORE INFORMATION, PLEASE CONTACT:

**LENNY BURNS**  
(757) 490-3141  
[lburns@pembrokerealty.com](mailto:lburns@pembrokerealty.com)

**Pembroke Realty Group**  
4433 Corporation Lane, Suite 250  
Virginia Beach, VA 23462  
[www.pembrokerealty.com](http://www.pembrokerealty.com)

2001 Colley Avenue

± 1,506 SF AVAILABLE



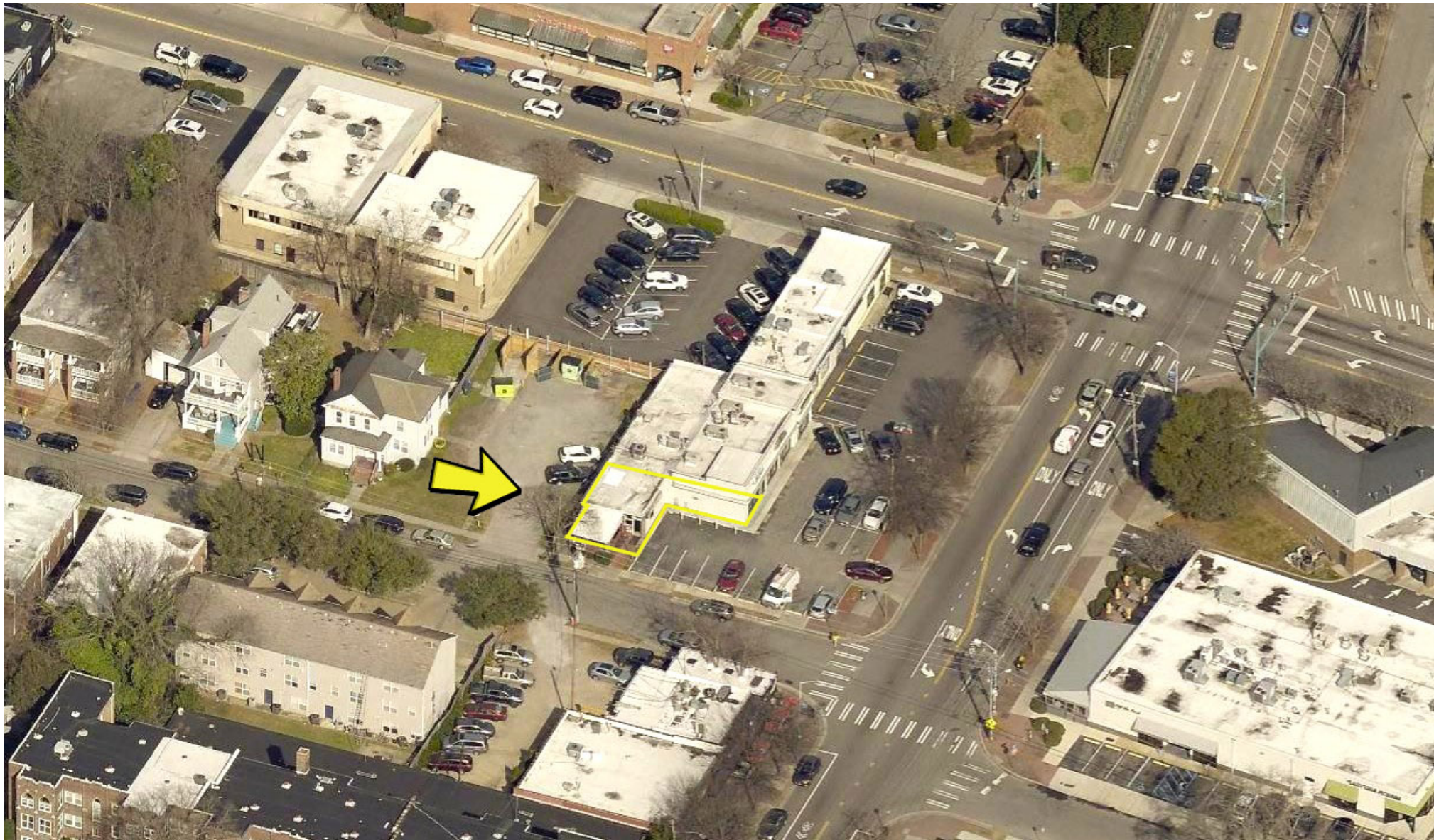
FOR MORE INFORMATION, PLEASE CONTACT:

**LENNY BURNS**  
(757) 490-3141  
[lburns@pembrokerealty.com](mailto:lburns@pembrokerealty.com)

**Pembroke Realty Group**  
4433 Corporation Lane, Suite 250  
Virginia Beach, VA 23462  
[www.pembrokerealty.com](http://www.pembrokerealty.com)

2001 Colley Avenue

± 1,506 SF AVAILABLE



FOR MORE INFORMATION, PLEASE CONTACT:

**LENNY BURNS**  
(757) 490-3141  
[lburns@pembrokerealty.com](mailto:lburns@pembrokerealty.com)

**Pembroke Realty Group**  
4433 Corporation Lane, Suite 250  
Virginia Beach, VA 23462  
[www.pembrokerealty.com](http://www.pembrokerealty.com)