



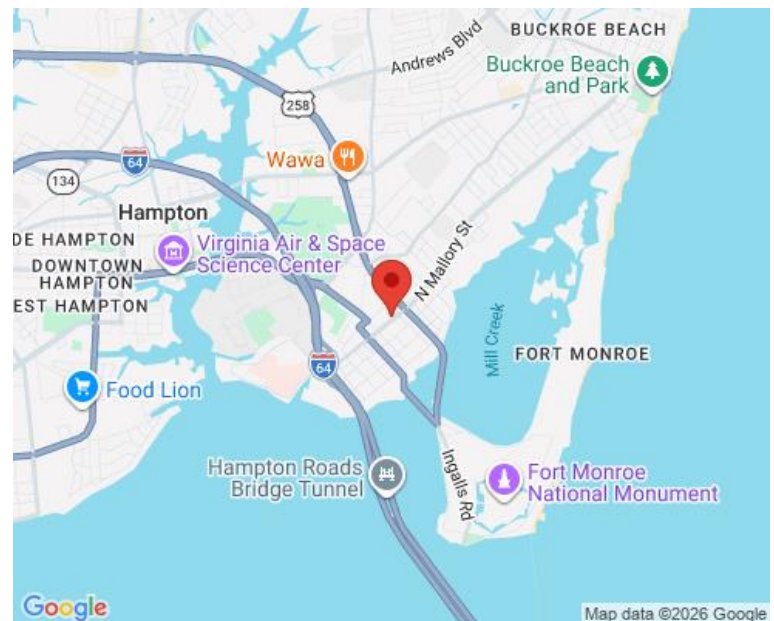
## PROPERTY OVERVIEW

## AREA MAP

**Mallory Street Commons** is a 22,983 SF, two-story, retail/office building located on Mallory Street in Hampton, VA. Great access to I-64, historic Ft. Monroe, Downtown Hampton, Hampton University and the Phoebus area.

- Co-tenants include Food Lion, VA ABC, New China and Skrimp Shack
- Built in 2009
- Second floor office space accessed by elevator

**AVAILABLE:** ±4,258 SF Office Space on 2nd Floor (Space not built-out yet; 5-yr lease required)



## DEMOGRAPHICS

Radius:	1 mile	3 mile	5 mile
Population:	8,349	53,440	105,301
Average HH Income:	\$42,662	\$47,294	\$48,995

FOR MORE INFORMATION, PLEASE CONTACT:

**LENNY BURNS**  
(757) 490-3141  
[lburns@pembrokerealty.com](mailto:lburns@pembrokerealty.com)

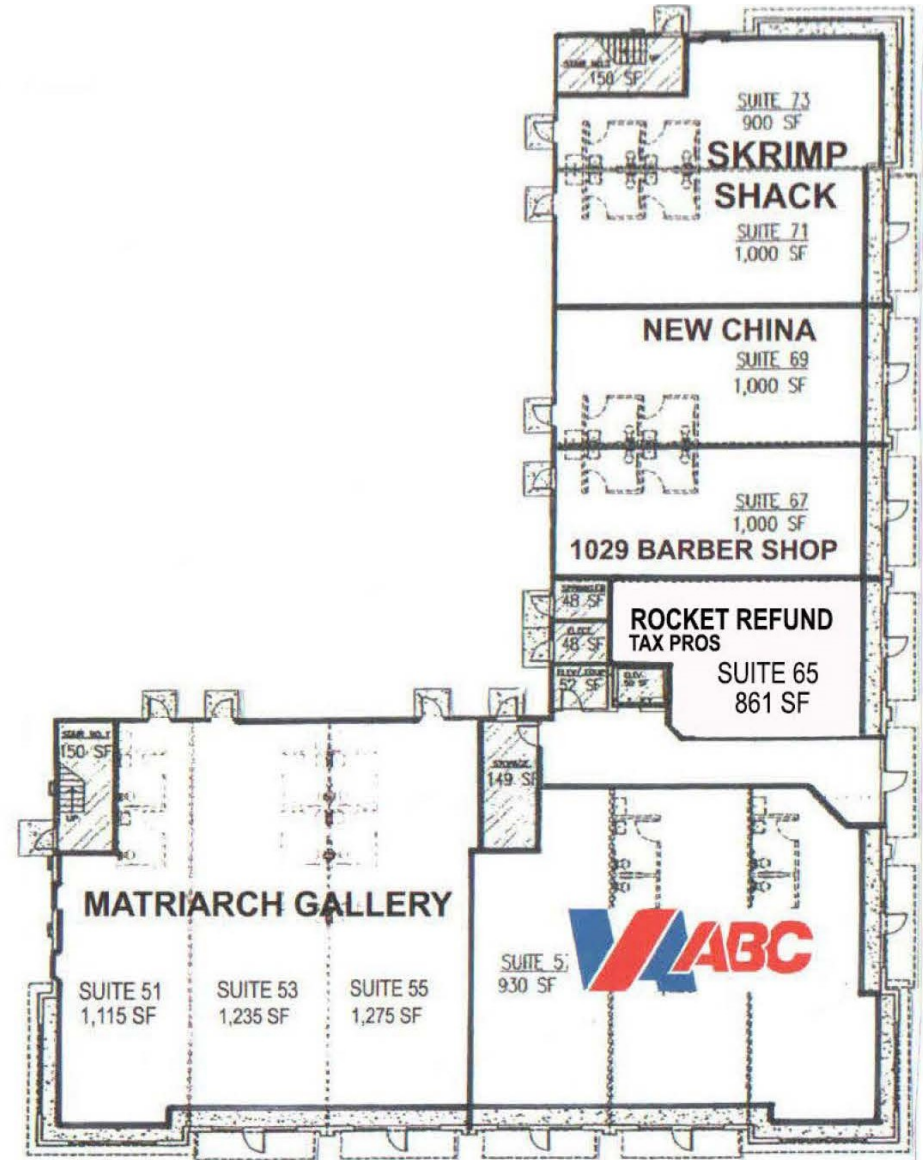
**COLE WERKHEISER**  
(757) 490-3141  
[cwerkheiser@pembrokerealty.com](mailto:cwerkheiser@pembrokerealty.com)

**Pembroke Realty Group**  
4433 Corporation Lane, Suite 250  
Virginia Beach, VA 23462  
[www.pembrokerealty.com](http://www.pembrokerealty.com)

## MALLORY COMMONS

### First Floor Plan

Suites 51-55	3,625 SF	Matriarch Gallery
Suites 57-61	2,970 SF	VA ABC
Suite 65	861 SF	Rocket Refund Tax Pros
Suite 67	1,000 SF	1029 Barber Shop
Suite 69	1,000 SF	New China
Suites 71-73	1,900 SF	Skrimp Shack



FOR MORE INFORMATION, PLEASE CONTACT:

**LENNY BURNS**

(757) 490-3141

[lburns@pembrokerealty.com](mailto:lburns@pembrokerealty.com)

**COLE WERKHEISER**

(757) 490-3141

[cwerkheiser@pembrokerealty.com](mailto:cwerkheiser@pembrokerealty.com)

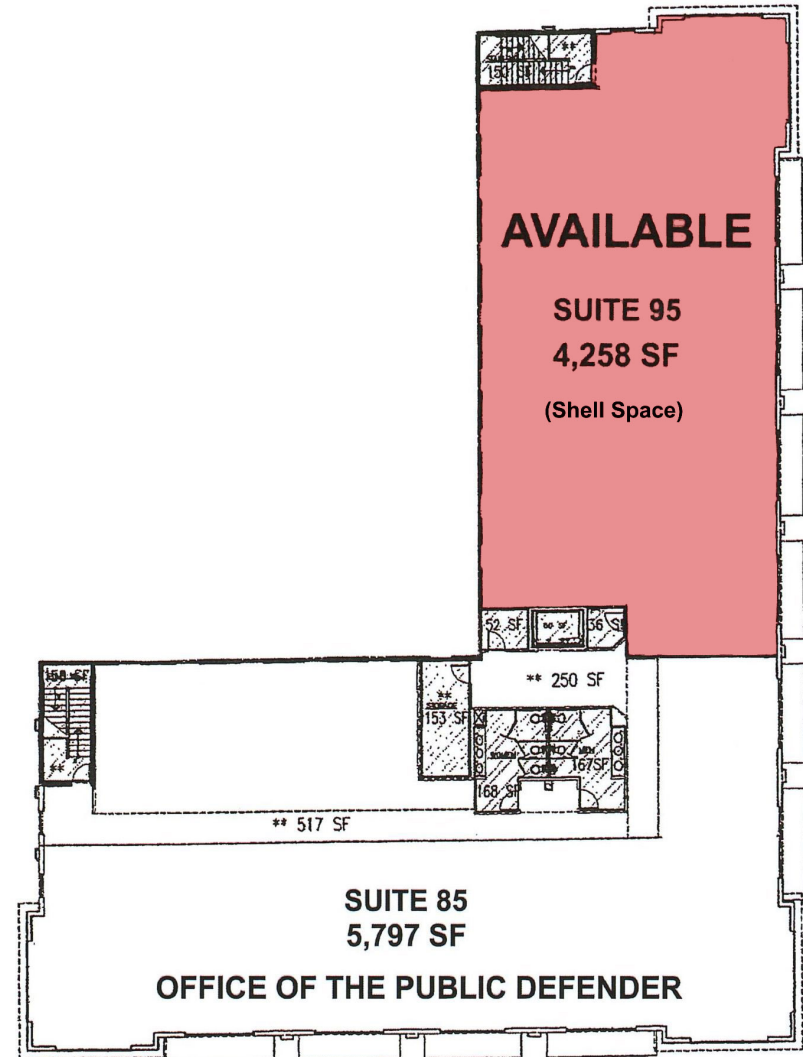
**Pembroke Realty Group**

4433 Corporation Lane, Suite 250

Virginia Beach, VA 23462

[www.pembrokerealty.com](http://www.pembrokerealty.com)

MALLORY COMMONS Second Floor Plan		
Suite 85	5,797 SF	Office of the Public Defender
<b>Suite 95</b>	<b>4,258 SF</b>	<b>AVAILABLE</b>



FOR MORE INFORMATION, PLEASE CONTACT:

**LENNY BURNS**  
(757) 490-3141  
[lburns@pembrokerealty.com](mailto:lburns@pembrokerealty.com)

**COLE WERKHEISER**  
(757) 490-3141  
[cwerkheiser@pembrokerealty.com](mailto:cwerkheiser@pembrokerealty.com)

**Pembroke Realty Group**  
4433 Corporation Lane, Suite 250  
Virginia Beach, VA 23462  
[www.pembrokerealty.com](http://www.pembrokerealty.com)