

SERVICE READY - FORMER HAIR SALON
Existing Plumbing in Place
± 1,813 SF AVAILABLE



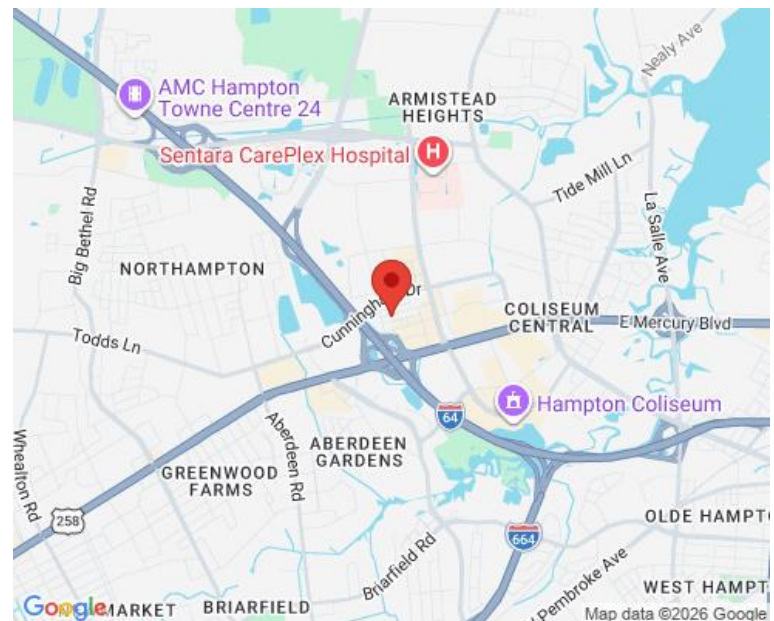
PROPERTY OVERVIEW

AREA MAP

Located within the Peninsula Town Center (PTC), with 1.4 mm SF of open air, mixed use within Hampton's Coliseum Central Business District. It is a Live, Work & Play environment. Take advantage of having your business located among major national, regional and the top local businesses in the PTC.

- Large parking lot next to the property
- Excellent driveability and walkability within the PTC
- Easy access to Mercury Boulevard, I-64 and I-264

AVAILABLE: ±1,813 SF Former Hair Salon Space



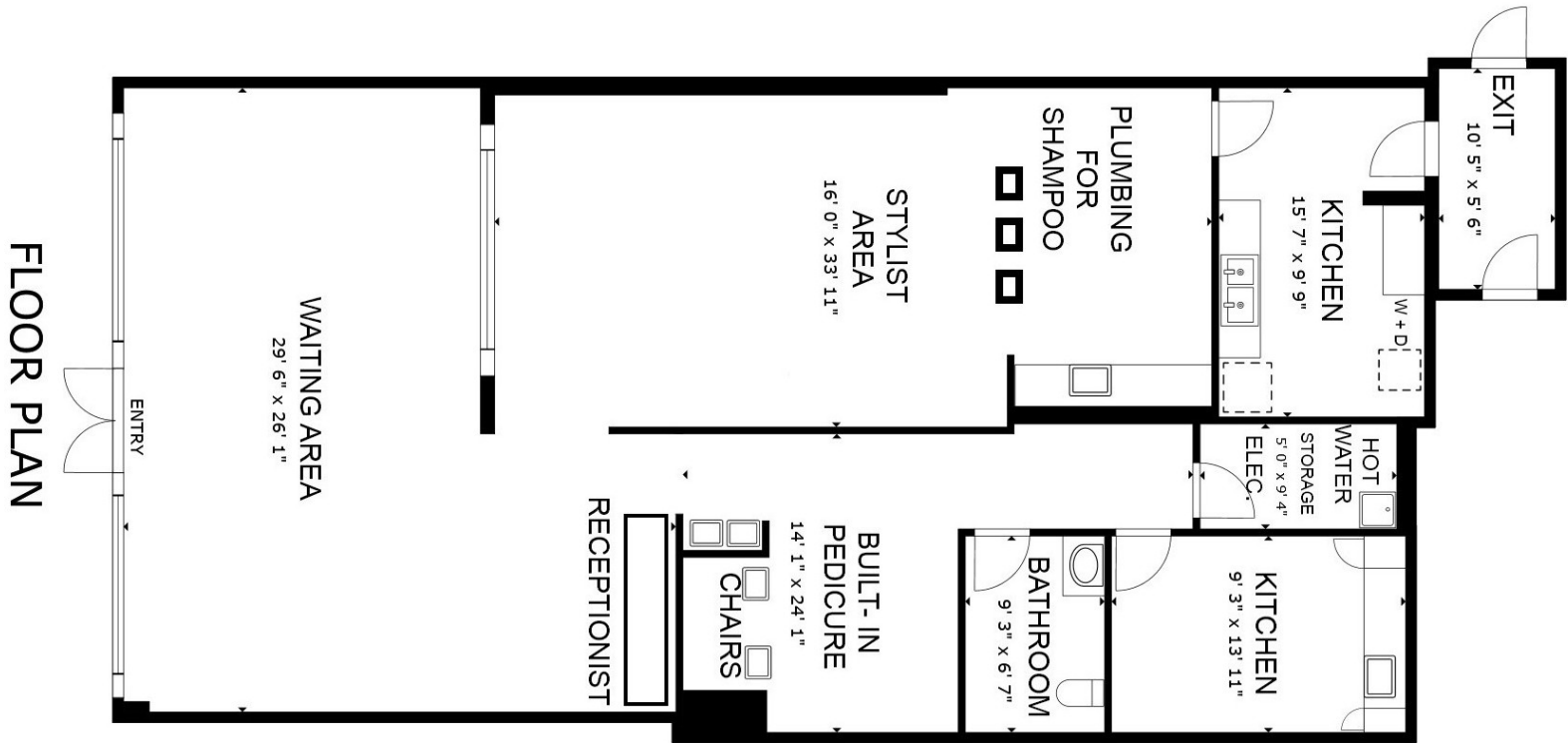
DEMOGRAPHICS

Radius:	1 mile	3 mile	5 mile
Population:	13,199	82,403	202,418
Average HH Income:	\$76,155	\$82,113	\$84,811
Traffic Count:	167,000		

FOR MORE INFORMATION, PLEASE CONTACT:

LENNY BURNS
(757) 490-3141
lburns@pembrokerealty.com

Pembroke Realty Group
4433 Corporation Lane, Suite 250
Virginia Beach, VA 23462
www.pembrokerealty.com



FLOOR PLAN

FOR MORE INFORMATION, PLEASE CONTACT:

LENNY BURNS

(757) 490-3141

lburns@pembrokerealty.com

Pembroke Realty Group

4433 Corporation Lane, Suite 250

Virginia Beach, VA 23462

www.pembrokerealty.com

