



## PROPERTY OVERVIEW

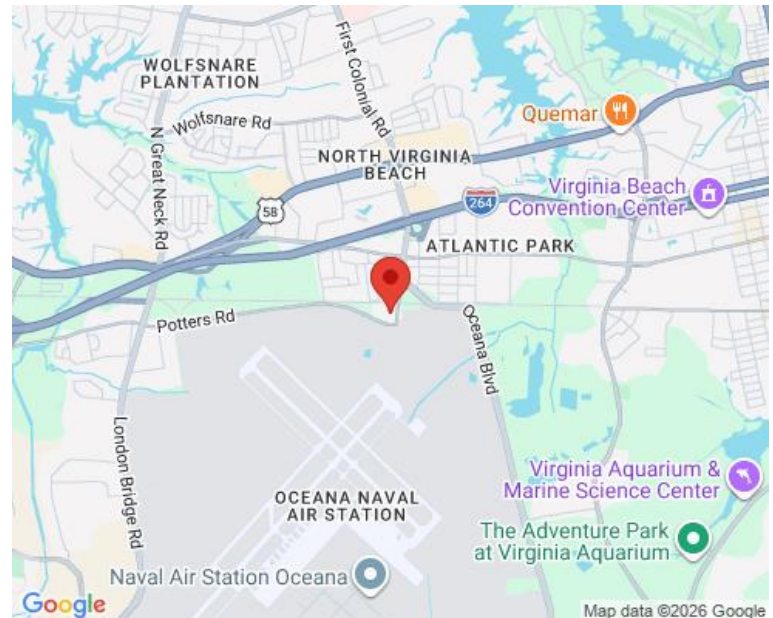
## AREA MAP

### TWO ±3,000 SF OFFICE/FLEX UNITS FOR SALE

These two-story office/flex spaces are located in Trade Center in the Hilltop area of Virginia Beach and are ideal for a possible office user, light industrial or indoor recreational business looking for space near Hilltop in Virginia Beach, VA.

- Zoned I-1 Light Industrial District; APZ1
- Just minutes from I-264 at First Colonial Road, NAS Oceana, Hilltop and Virginia Beach oceanfront
- These units do not have warehouse space
- Landlord may consider a lease or selling individually

**SALES PRICE : REDUCED FROM \$650,000 TO \$640,000**



FOR MORE INFORMATION, PLEASE CONTACT:

**LENNY BURNS**  
(757) 490-3141

[lburns@pembrokerealty.com](mailto:lburns@pembrokerealty.com)

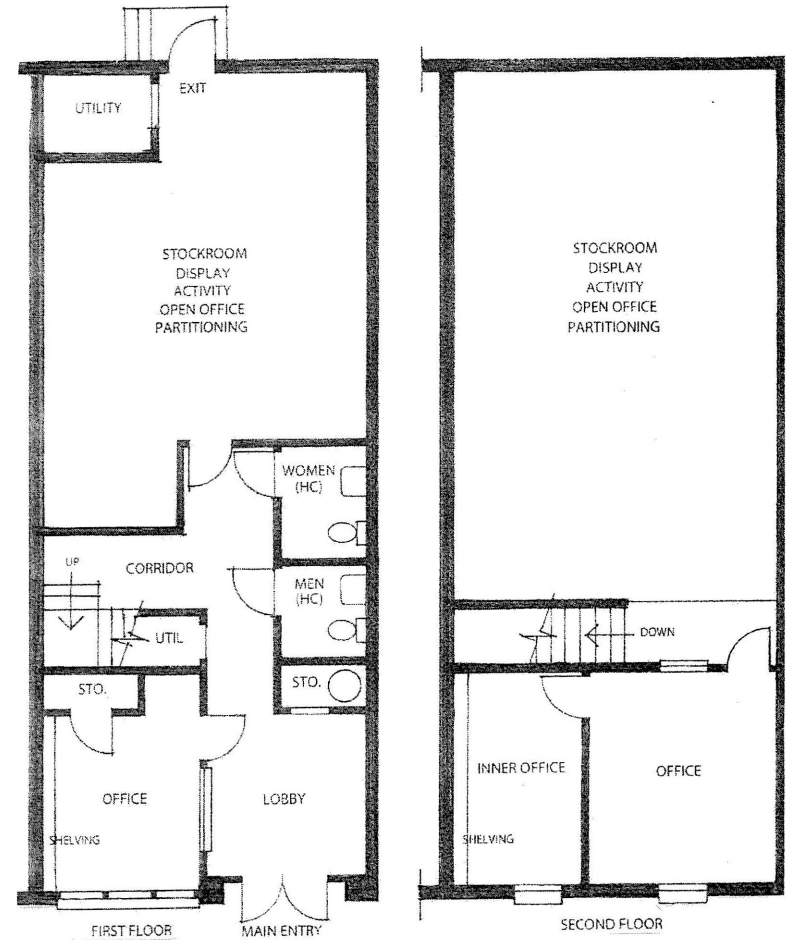
**COLE WERKHEISER**  
(757) 490-3141

[cwerkheiser@pembrokerealty.com](mailto:cwerkheiser@pembrokerealty.com)

**Pembroke Realty Group**  
4433 Corporation Lane, Suite 250  
Virginia Beach, VA 23462  
[www.pembrokerealty.com](http://www.pembrokerealty.com)



TRADE CENTER SUITE 115  
 105 SOUTH FIRST COLONIAL ROAD  
 VIRGINIA BEACH, VA 23454  
 (CORNER OF SOUTH FIRST COLONIAL & POTTERS RD.)



TRADE CENTER SUITE 116  
 105 SOUTH FIRST COLONIAL ROAD  
 VIRGINIA BEACH, VIRGINIA 23454  
 (CORNER OF SOUTH FIRST COLONIAL ROAD AND POTTERS ROAD)

FOR MORE INFORMATION, PLEASE CONTACT:

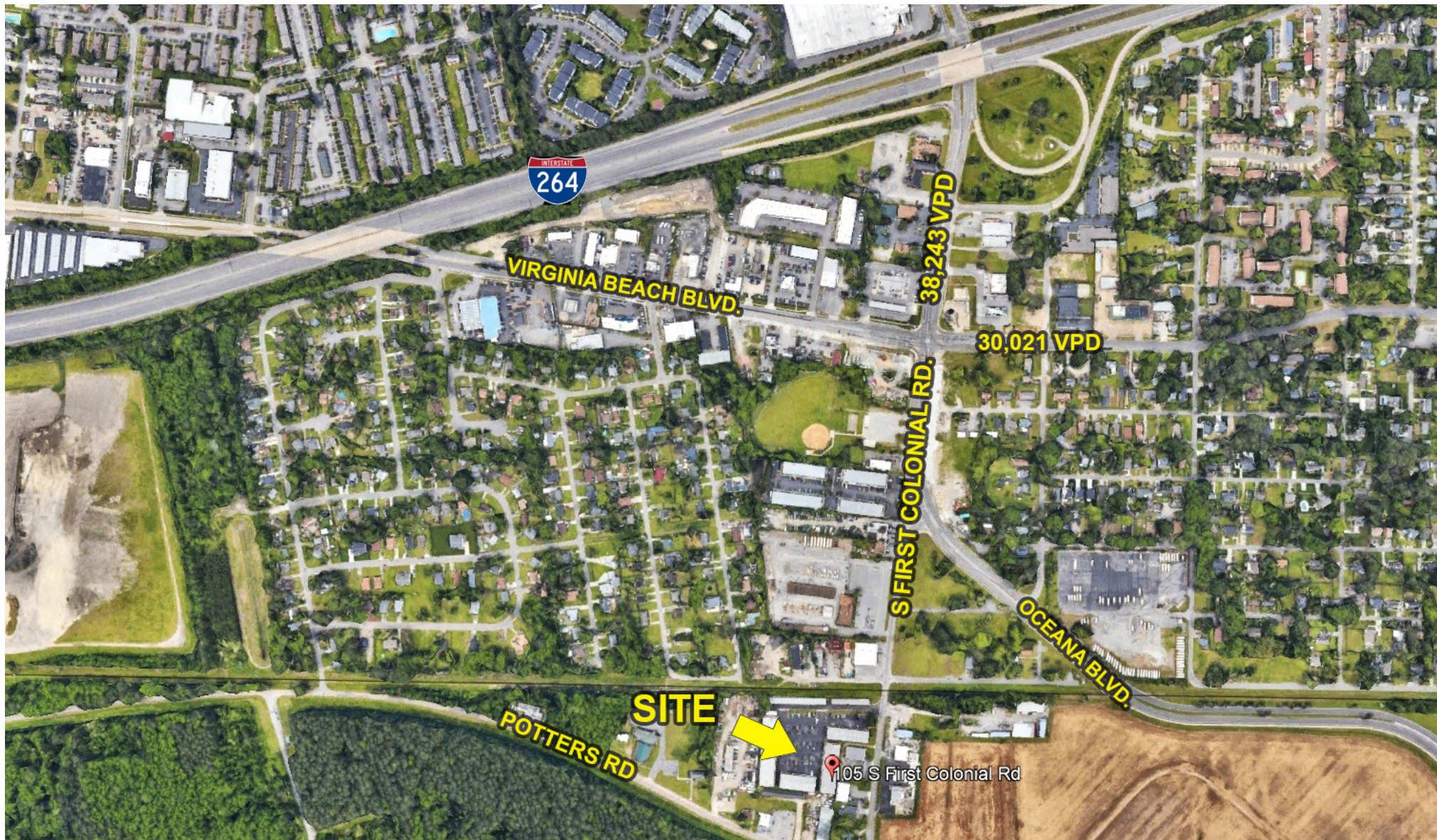
**LENNY BURNS**  
 (757) 490-3141  
[lburns@pembrokerealty.com](mailto:lburns@pembrokerealty.com)

**COLE WERKHEISER**  
 (757) 490-3141  
[cwerkheiser@pembrokerealty.com](mailto:cwerkheiser@pembrokerealty.com)

**Pembroke Realty Group**  
 4433 Corporation Lane, Suite 250  
 Virginia Beach, VA 23462  
[www.pembrokerealty.com](http://www.pembrokerealty.com)

# Trade Center

± 6,000 SF AVAILABLE



FOR MORE INFORMATION, PLEASE CONTACT:

**LENNY BURNS**  
(757) 490-3141  
[lburns@pembrokerealty.com](mailto:lburns@pembrokerealty.com)

**COLE WERKHEISER**  
(757) 490-3141  
[cwerkheiser@pembrokerealty.com](mailto:cwerkheiser@pembrokerealty.com)

**Pembroke Realty Group**  
4433 Corporation Lane, Suite 250  
Virginia Beach, VA 23462  
[www.pembrokerealty.com](http://www.pembrokerealty.com)