



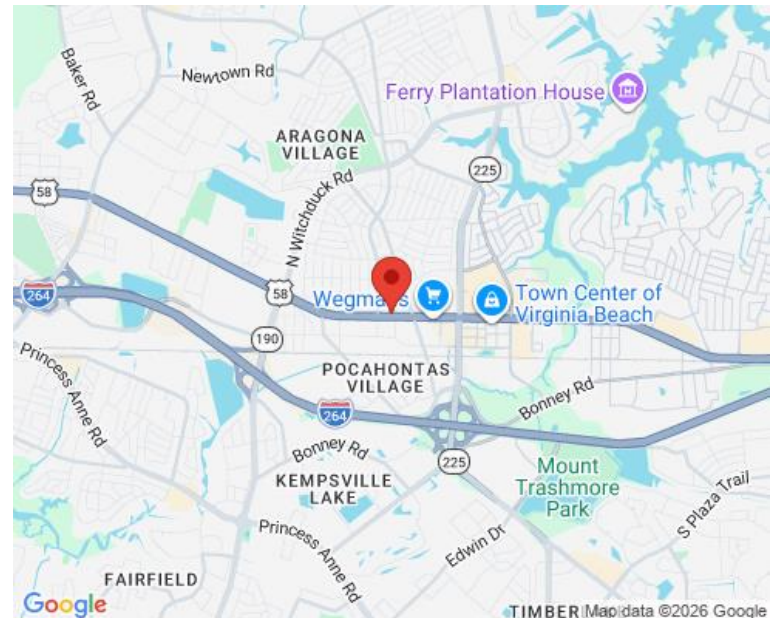
## PROPERTY OVERVIEW

## AREA MAP

Located near the Virginia Beach Central Business District, this +/-15,000 SF Out Parcel has excellent exposure on Virginia Beach Boulevard.

- Frontage on Virginia Beach Boulevard, a major east/west artery
- Close access to I-264/64

**UNDER LEASE TO DEL TACO**



FOR MORE INFORMATION, PLEASE CONTACT:

**COLE WERKHEISER**

(757) 490-3141

[cwerkheiser@pembrokerealty.com](mailto:cwerkheiser@pembrokerealty.com)

**Pembroke Realty Group**

4433 Corporation Lane, Suite 250

Virginia Beach, VA 23462

[www.pembrokerealty.com](http://www.pembrokerealty.com)

# 4846 Virginia Beach Boulevard



## ARAGONA VILLAGE SHOPPING CENTER

VIRGINIA BEACH BOULEVARD  
VIRGINIA BEACH, VIRGINIA      JUNE 22, 2018

**PARKING INFORMATION:**  
48 PARKING SPACES AFFECTED BY NEW LAYOUT  
11 PARKING SPACES ADDED BY NEW LAYOUT  
37 TOTAL PARKING SPACES LOST

Cox, Klierer &  
Company, P.C.

ARCHITECTURE  
2533 VIRGINIA BEACH BOULEVARD  
VIRGINIA BEACH, VIRGINIA • 23462-2035  
Phone: 757-531-4633 • Fax: 757-531-4638  
www.coxklierer.com • c.klierer@coxklierer.com  
© COX, KLIEWER & COMPANY, P.C. • 2017

FOR MORE INFORMATION, PLEASE CONTACT:

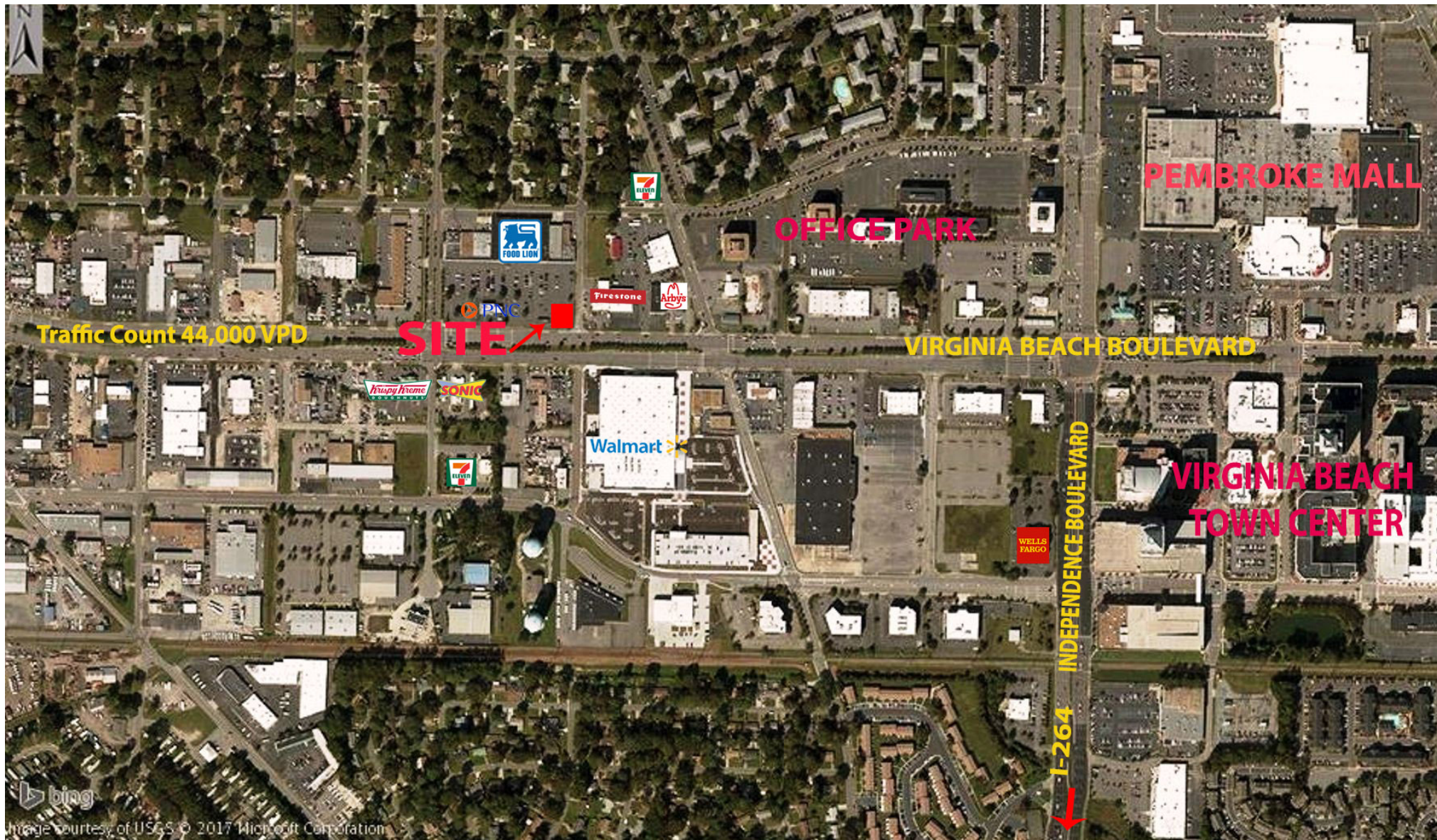
**COLE WERKHEISER**

(757) 490-3141

[cwerkheiser@pembrokerealty.com](mailto:cwerkheiser@pembrokerealty.com)

**Pembroke Realty Group**  
4433 Corporation Lane, Suite 250  
Virginia Beach, VA 23462  
[www.pembrokerealty.com](http://www.pembrokerealty.com)

# 4846 Virginia Beach Boulevard



FOR MORE INFORMATION, PLEASE CONTACT:

**COLE WERKHEISER**

(757) 490-3141

[cwerkheiser@pembrokerealty.com](mailto:cwerkheiser@pembrokerealty.com)

**Pembroke Realty Group**

4433 Corporation Lane, Suite 250

Virginia Beach, VA 23462

[www.pembrokerealty.com](http://www.pembrokerealty.com)